

FRAME NOTES:

- (SEE A-F.1) 2-2X12'S #2 LAM. BEAM FLUSH W/ JOIST HANGERS
- (SEE A-F.2) 2-PLY 16' LVL FLUSH BEAM
- (SEE A-F.3) 2-2X12'S #2 LAM. BEAM FLUSH W/ JOIST HANGERS
- (SEE A-F.4) 2-PLY 11 7/8' LVL FLUSH BEAM

SQUARE FOOTAGE

2998 SQ.FT. FRAME/INHABITABLE
 2836 SQ.FT. VENEER
 827 SQ.FT. GARAGE
 400 SQ.FT. BONUS APX.
 210 ALL COVERED PORCHES
 4435 TOTAL UNDER ROOF W/ BONUS

NOTES:

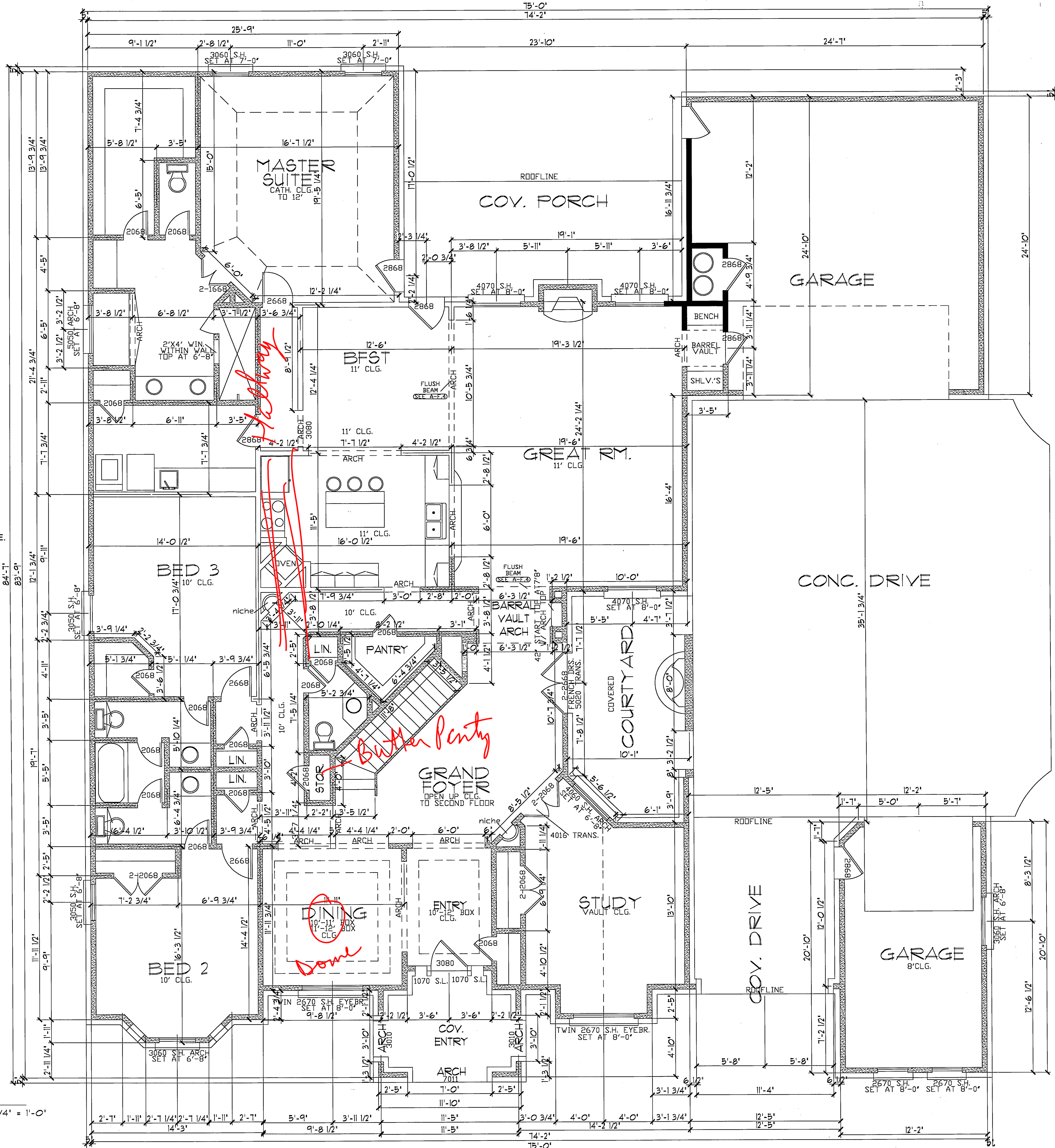
ALL WORK HAS BEEN DONE UNDER ALL STATE, COUNTY & CITY CODES AND REGULATIONS
 NO MODIFICATIONS MAY BE MADE TO THIS PLAN WITHOUT WRITTEN CONSENT FROM ARCHITECT
 IF QUESTION ON ANY ISSUE PLEASE CONSULT ARCHITECT, 405-819-5074

IF ANY UNFORSEEN ISSUES OR PROBLEMS SHOULD HAPPEN BUILDER MUST FIRST CONSULT W/ ORIGINAL DESIGNER/ARCHITECT FOR SOLUTION ALL ISSUES WILL BE HANDLED IN A FAIR AND FAST

FOR MORE INFO. ABOUT OUR PLANS CALL AT ANY TIME.

NOTE:

NOT ALL DIMENSIONS ARE TO O.C. DOUBLE CHECK ALL!!!



1 FLOOR PLAN

SCALE: 1/4" = 1'-0"

A2

FLOOR PLAN

TERRY SEAGUL HOMES

RYAN D. SCAMEHORN

4305 N.W. 59TH ST.
 OKLA. CITY, OK 73112
 405-819-5074
 801-949-0096